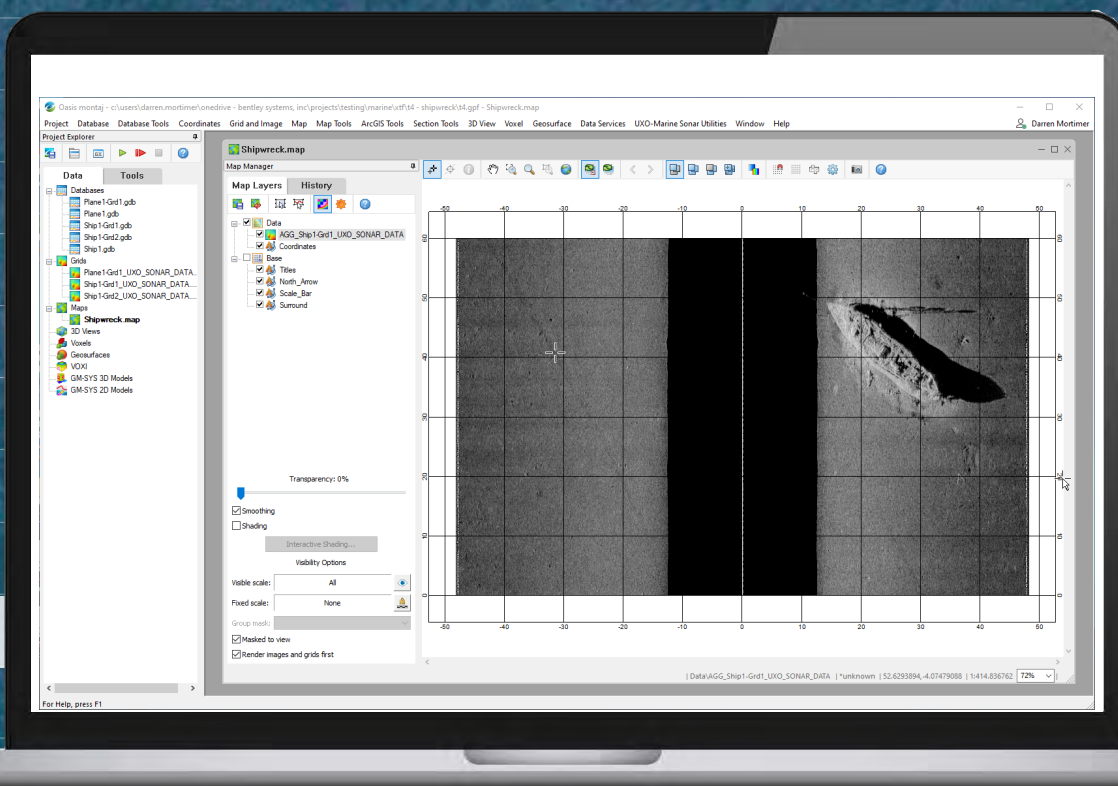


new release



Oasis montaj 2022.2 Release Notes

The following issues have been addressed for Oasis montaj **2022.2**:

General

CN: 00069010	The warp is no longer removed when a grid georeferenced with the 'Attach Warp to Grid' option is added to a 3D View.
CN: 00078650	The Statistics tool reports on additional statistical calculations, including the median, for both scalar and array channels.
CN: 00092968	In the Grid Data tool (Preview tab), the Auto-Refresh selection is remembered on subsequent uses of the tool.
CN: 00113790	Initialization code issues have been resolved in the Color Tool, and parameter fields are populated as expected.
CN: 00114012	The generalized derivative (Grid and Image > Filters) is correctly calculated and shows no directional bias (independent of the variations in X & Y) when Φ is set to 90.
CN: 00118189	The import of an ASCII file (Database > Import > ASCII) no longer fails when creating a template file (*.i3); an empty error message is no longer displayed.
CN: 00118971	The error "A Windows.Form GUI exception occurred. Map not accessible" no longer occurs on interactively locating the colour bar of a shaded grid on the map.
CN: 00119319	The errors "Error reading Surfer7 Grid ... Bad data block tag..." or "Unknown parameter 'PIXEL' in the Dat String..." are no longer triggered when attempting to display or convert a Surfer grid file (GRD).
CN: 00119906	In 'Grid Data,' a variogram plot is generated when the gridding method selected is "Kriging".
CN: 00124428	Exporting a large database with array channels to a CSV file correctly reads all the elements from the exported array channels to the output file.

Install

The silent install of Oasis montaj (using a script and a silent command) works as expected on machines that do not have .NET 4.8 installed.

Geosoft Extensions

2D Filtering

CN: 00114012 In 2D Filtering, the generalized derivative is correctly calculated and shows no directional bias (independent of the variations in X & Y) when Φ is set to 90.

Airborne Quality Control

CN: 00060365 The Airborne QC results are plotted in unique colors, and the user can change the designated colour.

GPHX-1822 The error "A topography channel is required if the maximum elevation is defined" is no longer triggered when running the 'Altitude Deviation' tool without a topography channel.

GPHX-2579 In the 'Altitude Deviation' dialog, you can choose between a 'Flight elevation channel' and a 'Terrain clearance channel' to define the vertical position.

Gravity and Terrain Correction

CN: 00082479 In 'Import Gravity Survey,' the date format can be specified for CG-6 imports.

UAV Merge Sorties

GPHX-1560 'Define Sortie Subareas' can specify the size of sorties based on endurance time and airspeed.

UX-Analyze

CN: 00076688 'Background Location Validation Test' reads the low gate values from both SBR and SMD data and provides a clear message and workflow when the two have different low gate values.

CN: 00076688 'Background Location Validation Test' warns if the background difference window contains missing data (dummy values) and advises to select difference gate values.

CN: 00115639 Calculate Background Database QC Stats flags measurements with transients that do not decay (flatlined data).

[NS-2615] The error "Input string was not in a correct format" no longer occurs in 'Create Polarization Plots with Library.'

[NS-3043] Abort no longer occurs when processing large dynamic data. Related to: <sCheckDummy_GS>

[NS-3222] 'Determine Coherence Anomaly Threshold' can be executed as a script from the Command Prompt (cmd.exe).

[NS-3301] 'Process Dynamic IVS Data' uses a suffix when naming output maps, grids, and plots.

[NS-3302] In 'Process Dynamic IVS Data,' you can choose what anomaly grid is used to pick the target locations: amplitude (monostatic), model coherence, or both.

UXO Land & UXO Marine

CN: 00119098 'Velocity Calculation' no longer issues the warning "Failed to insert into table Speed_Table..." when a new DID Access database is created through the 'Setup Parameters' tool: Speed_Table and Speed_Map_ID are correctly populated.

Target 2022.2

The following issues have been addressed for Target **2022.2**:

General

CN: 00069010	The warp is no longer removed when a grid georeferenced with the 'Attach Warp to Grid' option is added to a 3D View.
CN: 00078650	The Statistics tool reports on additional statistical calculations, including the median, for both scalar and array channels.
CN: 00092968	In the Grid Data tool (Preview tab), the Auto-Refresh selection is remembered on subsequent uses of the tool.
CN: 00113790	Initialization code issues have been resolved in the Color Tool, and parameter fields are populated as expected.
CN: 00114012	The generalized derivative (Grid and Image > Filters) is correctly calculated and shows no directional bias (independent of the variations in X & Y) when Φ is set to 90.
CN: 00118189	The import of an ASCII file (Database > Import > ASCII) no longer fails when creating a template file (*.i3); an empty error message is no longer displayed.
CN: 00118971	The error "A Windows.Form GUI exception occurred. Map not accessible" no longer occurs on interactively locating the colour bar of a shaded grid on the map.
CN: 00119319	The errors "Error reading Surfer7 Grid ... Bad data block tag..." or "Unknown parameter 'PIXEL' in the Dat String..." are no longer triggered when attempting to display or convert a Surfer grid file (GRD).
CN: 00119906	In 'Grid Data,' a variogram plot is generated when the gridding method selected is "Kriging".
CN: 00124428	Exporting a large database with array channels to a CSV file correctly reads all the elements from the exported array channels to the output file.

Install

CN: 00120635	The silent install of Oasis montaj (using a script and a silent comnowqmand) works as expected on machines that do not have .NET 4.8 installed.
--------------	---

Geosoft Viewer 2022.2

The following issues have been addressed for Geosoft Viewer **2022.2**:

General

CN: 00078650	The Statistics tool reports on additional statistical calculations, including the median, for both scalar and array channels.
CN: 00113790	Initialization code issues have been resolved in the Color Tool, and parameter fields are populated as expected.
CN: 00119319	The errors "Error reading Surfer7 Grid ... Bad data block tag..." or "Unknown parameter "PIXEL" in the Dat String..." are no longer triggered when attempting to display or convert a Surfer grid file (GRD).
CN: 00124428	Exporting a large database with array channels to a CSV file correctly reads all the elements from the exported array channels to the output file.

Install

CN: 00120635	The silent install (using a script and a silent command) of Oasis montaj works as expected on machines that do not have .NET 4.8 installed.
--------------	---

DAP Server 2022.2

The following issues have been addressed for DAP Server **2022.2**:

DAP Admin, DAP Server Enterprise, & GDP

CN 00109788	Datasets no longer in the dataset file system are removed from the DAPCatalog database.
-------------	---
