

## Release Notes

The latest Oasis montaj release provides significant speed and user experience improvements with features like background gridding and multi-grid 2D filtering. Background gridding allows users to run gridding operations while continuing their work, providing a substantial productivity boost and multi-grid 2D filtering allows users to select multiple input grids and apply filters with just a few clicks, increasing efficiency. Improvements to map projections, the IGRF calculator, UX-Analyze, and the Drillhole Plotting Section View are also included in this release.

During this release cycle, we have also been investing heavily in developing new cloud capabilities of Seequent Evo, in support of our vision for the future of cloud-connected technology.

When upgrading to the latest Oasis montaj version, 2023.2, please note that the Seequent Connector will automatically update for offline mode functionality. For Leapfrog users, it's essential to run one of these compatible point releases: 2021.1.4, 2021.2.7, 2022.1.3, 2023.1.2, 2023.1.2, or 2023.2.1 to ensure Leapfrog continues working seamlessly.

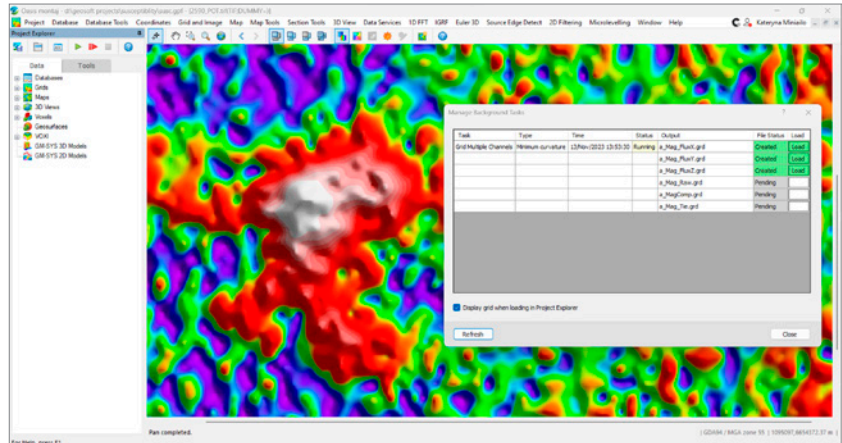
# Table of Contents

New and improved features in Oasis montaj 2023.2	2
Background gridding	2
Multi-Grid Filtering (2D Filtering)	2
Map projection user experience	2
IGRF calculator updates (Geophysics)	2
APEX and UltraTEM support (UX-Analyze)	3
MPV HDF version 1 support (UX-Analyze)	3
Custom media size support	3
Bug Fixes	4
Oasis montaj 2023.2	4
Target 2023.2	6
Geosoft Viewer 2023.2	7
DAP Server 2023.2	7

# New and improved features in Oasis montaj 2023.2

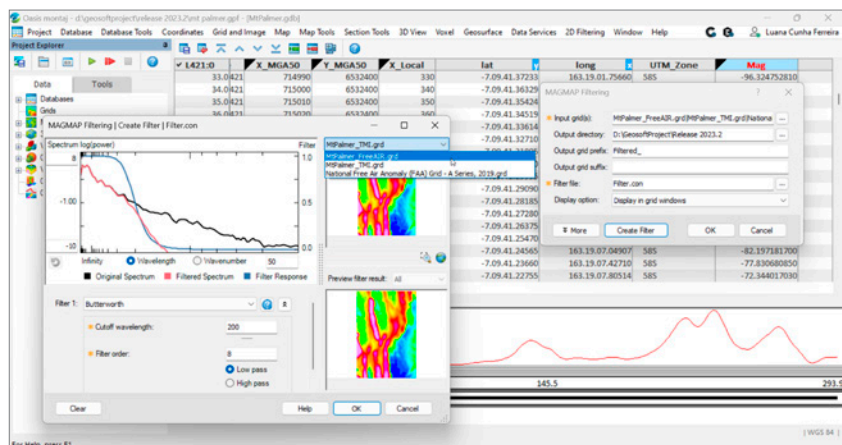
## Background gridding

Continue cleaning data and setting up grids while gridding operations run in the background. This allows for efficient multitasking.



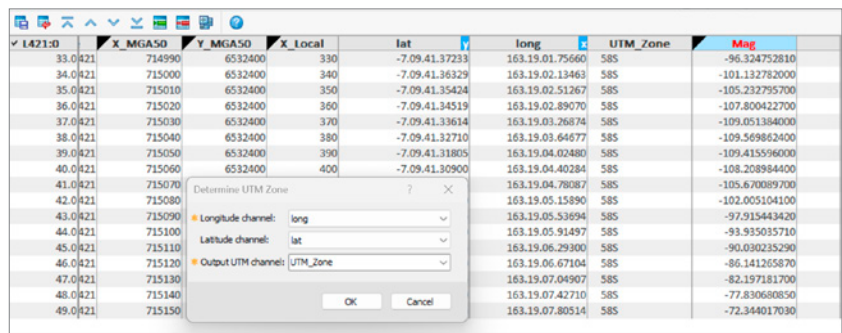
## Multi-Grid Filtering (2D Filtering)

Easily batch-clean data with efficient multi-grid filtering. Multi-select input grids and apply filters in just 3 clicks. Focus on selected grids in the preview and auto-save output grids to designated folders with chosen prefixes. Then, adjust and rerun filters as needed.



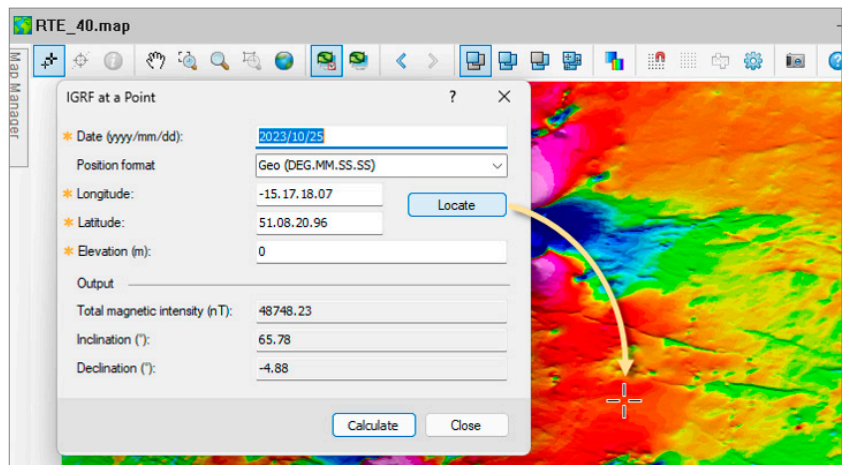
## Map projection user experience

Streamline map projections with intuitive UTM Zone guidance. Quickly select from a list of suggested UTM zones based on coordinates, ensuring accuracy and ease in every projection choice.



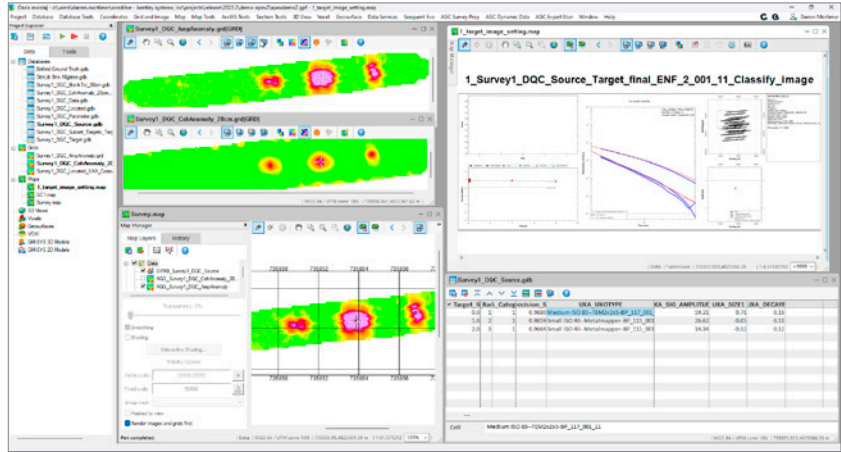
## IGRF calculator updates (Geophysics)

Experience improvements in the IGRF calculation and user interface. The design now aligns with the official government IGRF calculator for consistency. The interface is more straightforward, making IGRF management easier, and you can choose between historical records, whether non-definitive or definitive constituent models.



## APEX and UltraTEM support (UX-Analyze)

Customers using White River Technologies Inc. sensors for AGC projects can now import and analyse APEX sensor data with UX-Analyze.



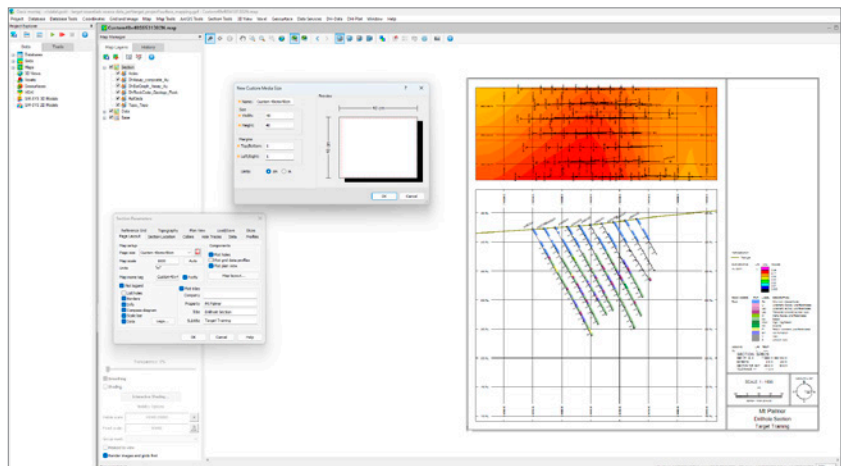
## MPV HDF version 1 support (UX-Analyze)

Customers involved in AGC projects with Man-portable vector (MPV) sensors can now directly import data in the HDF v1 format to Oasis montaj. This enhancement simplifies the data integration process, aligning with the DoD's 2023 mandate.

Sensor	HDF v1
Metal Mapper 2x2	Pending
TEMSense	Supported
MPV	Supported
APEX	Supported
UltraTEM	Coming for 2024

## Custom media size support

The Drillhole Plotting Section View now offers custom media size selection, allowing users to tailor section views to their specific needs, enhancing visualisation precision and streamlining workflow efficiency.



# Bug Fixes

## Oasis montaj 2023.2

The following issues have been addressed for Oasis montaj **2023.2**:

### General

---

CN: N/A	Abort no longer occurs on an attempt to export a 3D View as a PDF file to the C:\ root directory. Related to: <sRender3DPDF_MVIEW>
CN: 00055675	Modifying the colour distribution in a grid located on a map maintains the colour legend bar parameters initially specified.
CN: 00093492	The colour legend bar on a map is updated automatically when the colour settings of a grid are changed and the Colour tool is closed.
CN: 00095975	Merging array channel databases with lines starting at different values works as expected.
CN: 00110442	In Oasis montaj, EPSG LO15 to LO33 projections are now supported; the error "...'22289' EPSG code is invalid or not supported ..." is no longer triggered when importing an MX-Deposit project.
CN: 00132050	When converting a 3D SEG-Y file to a Geosoft file (voxel, grid, database), if the vertical distance units differ from the horizontal units, they will be scaled to match the horizontal units before the output files are generated.
CN: 00142937	In 'Grid Math', using multiple statistical functions in a single expression works as expected.
CN: 00144674	The message "Saving image to disk" no longer appears repeatedly when extracting horizontal grids from a voxel model.
CN: 00148792	Renaming an ER Mapper grid in Oasis montaj renames the ERS file on the system and all its auxiliary files including the binary file.
CN: 00154842	Displaying a grid on a map using the 'Normal Distribution' colour method allows for values outside the 2.5 standard deviation range.
CN: 00161940	Exporting a voxel with completely dummied columns to a 3D SEG-Y file marks the zeroed traces as "unknown" and sets their "Trace identification code" header to 0 in the Trace Viewer.
CN: 00166341	2D SEG-Y files with trace lengths up to 65k are successfully imported into Geosoft databases; the error "Error seeking file: <filepath>\<gdb> At offset (...) from origin (0). An attempt was made to move the file pointer" no longer occurs.
CN: 00169434	Smoothing a voxel with $64 * X + 1$ cells in X (or Y, or Z) direction no longer triggers the error "Graphics card returned an error code #OpenGL error...".

### Sequent Connector

---

CN: 00165016	When working offline, you can select the new option 'Turn off Internet Connection Check' in the Sequent Connector menu to ensure the Connector does not try to auto-reconnect if it detects an intermittent internet connection.
--------------	--

## Geosoft Extensions

### 2D Filtering

---

CN: 00130699 In 'MAGMAP Filtering', the error "Unable to open ER Mapper files for READWRITE:" no longer occurs on applying a filter to ER Mapper Data (\*.ers).

---

### GM-SYS Profile Modelling

---

CN: 00071061 Newly generated GM-SYS Profile models are automatically added to the workspace in Oasis montaj; they are no longer opened in GM-SYS Profile stand-alone.

---

CN: 00075313 GM-SYS Profile models created from model-building GXs (GMSMARK, GMSMULTI, and GMSPROF) are automatically upgraded and added to the workspace in Oasis montaj.

---

### GM-SYS 3D Modelling

---

CN: 00091144 The message "Layer Cannot be Added" no longer appears when a new layer is inserted below all the other layers in a GM-SYS 3D model.

---

### Grav/Mag Interpretation

---

CN: N/A In Source Edge Detect (SED), the edges are displayed without the errors "Map is not accessible" and "Map cannot be locked twice".

---

CN: N/A In Euler 3D | Grid Data, the generated grid is displayed on the current map as expected.

---

### Induced Polarization & Resistivity

---

CN: 00153496 When importing IP binary data from an instrument dump file into an Oasis montaj database, the channels are correctly added/updated and populated for all the lines in the database.

---

CN: 00153496 In the 'Recalculate Derived Data' tool, the electrode-to-channel assignments are accurate, and the apparent resistivity values are correctly recalculated.

---

CN: 00170596 The 'Identify Reversed Polarity' tool correctly swaps the coordinates of the two receivers / changes the sign of the voltage for the identified reversed polarity readings.

---

### UAV Merge Sorties

---

CN: 00158653 When defining sortie paths, there is no shift between the DEM and calculated drape altitude profiles.

---

### UX-Analyze

---

CN: N/A In the tool 'Determine Coherence Anomaly Threshold', the background amplitude threshold parameter is calculated automatically based on the TOI and project depth parameters.

---

### UXO Marine

---

CN: 00160110 Running 'Model Targets (Batch)' with a large survey database and located targets no longer triggers the error "Unable to open "...gdb" for mode "ReadOnly" because (the process cannot access the file because it is being used by another process)..."

---

### VOXI

---

CN: 00152240 Creating a VOXI document using an ER Mapper grid for surface definition no longer triggers the error "<\*.ers> does not have a valid GRD file header".

---

## Target 2023.2

The following issues have been addressed for Target **2023.2**:

### General

---

CN: N/A	Abort no longer occurs on an attempt to export a 3D View as a PDF file to the C:\ root directory. Related to: <sRender3DPDF_MVIEW>
CN: 00055675	Modifying the colour distribution in a grid located on a map maintains the colour legend bar parameters initially specified.
CN: 00093492	The colour legend bar on a map is updated automatically when the colour settings of a grid are changed and the Colour tool is closed.
CN: 00095975	Merging array channel databases with lines starting at different values works as expected.
CN: 00110442	In Oasis montaj, EPSG LO15 to LO33 projections are now supported; the error "...'22289' EPSG code is invalid or not supported ..." is no longer triggered when importing an MX-Deposit project.
CN: 00132050	When converting a 3D SEG-Y file to a Geosoft file (voxel, grid, database), if the vertical distance units differ from the horizontal units, they will be scaled to match the horizontal units before the output files are generated.
CN: 00142937	In 'Grid Math', using multiple statistical functions in a single expression works as expected.
CN: 00144674	The message "Saving image to disk" no longer appears repeatedly when extracting horizontal grids from a voxel model.
CN: 00148792	Renaming an ER Mapper grid in Oasis montaj renames the ERS file on the system and all its auxiliary files including the binary file.
CN: 00154842	Displaying a grid on a map using the 'Normal Distribution' colour method allows for values outside the 2.5 standard deviation range.
CN: 00161940	Exporting a voxel with completely dummied columns to a 3D SEG-Y file marks the zeroed traces as "unknown" and sets their "Trace identification code" header to 0 in the Trace Viewer.
CN: 00166341	2D SEG-Y files with trace lengths up to 65k are successfully imported into Geosoft databases; the error "Error seeking file: <filepath>\<gdb> At offset (...) from origin (0). An attempt was made to move the file pointer" no longer occurs.
CN: 00169434	Smoothing a voxel with $64 * X + 1$ cells in X (or Y, or Z) direction no longer triggers the error "Graphics card returned an error code #OpenGL error...".

### Sequent Connector

---

CN: 00165016	When working offline, you can select the new option 'Turn off Internet Connection Check' in the Sequent Connector menu to ensure the Connector does not try to auto-reconnect if it detects an intermittent internet connection.
--------------	--

---

## Geosoft Viewer 2023.2

The following issues have been addressed for Geosoft Viewer **2023.2**:

### General

---

CN: N/A	Abort no longer occurs on an attempt to export a 3D View as a PDF file to the C:\ root directory. Related to: <sRender3DPDF_MVIEW>
CN: 00055675	Modifying the colour distribution in a grid located on a map maintains the colour legend bar parameters initially specified.
CN: 00093492	The colour legend bar on a map is updated automatically when the colour settings of a grid are changed, and the Colour tool is closed.
CN: 00148792	Renaming an ER Mapper grid in Oasis montaj renames the ERS file on the system and all its auxiliary files including the binary file.
CN: 00154842	Displaying a grid on a map using the 'Normal Distribution' colour method allows for values outside the 2.5 standard deviation range.
CN: 00169434	Smoothing a voxel with $64 * X + 1$ cells in X (or Y, or Z) direction no longer triggers the error "Graphics card returned an error code #OpenGL error...".

---

### Sequent Connector

---

CN: 00165016	When working offline, you can select the new option 'Turn off Internet Connection Check' in the Sequent Connector menu to ensure the Connector does not try to auto-reconnect if it detects an intermittent internet connection.
--------------	--

---

## DAP Server 2023.2

The following issues have been addressed for DAP Server **2023.2**:

### DAP Admin / DAP Server Enterprise

---

CN: N/A	If an acQuire connector is updated in DAP Admin Portal while the same connector is being extracted via Seeker/GDP, the extraction session is cancelled, and the update of the connector completes successfully. Both processes complete successfully if the update of the connector is triggered first.
---------	---

---