

## Release Notes

We are excited to share the latest release of Oasis montaj, packed with user-requested features and efficiency improvements. This update introduces more multitasking, better import functions, and improved alignment with ArcGIS Pro while continuing to address customer requests and improve the features you rely on.

Upgrade to Oasis montaj 2024.2 to keep working while gridding sections and filtering grids in the background. Spend less time manually aligning and adjusting fiducial data and coordinate system information when importing data. View GIS data just like in ArcGIS Pro, and quickly open and close map managers to free up valuable workspace. This release is designed to make your workflows smoother and help you get more done.

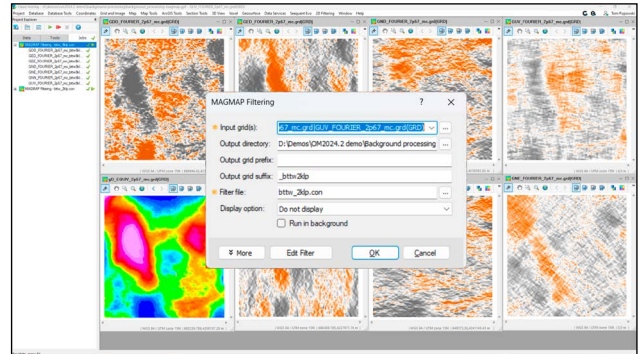
# Table of Contents

New and improved features in Oasis montaj 2024.2	2
Run 2D FFT filtering in the background	2
Run section gridding in the background	2
Import 2D LYRX files	2
Manage map managers	3
Support original fiducials on import	3
ASEG-GDF2 file handling	3
Bug fixes	4
Oasis montaj 2024.2	4
Target 2024.2	5
Geosoft Viewer 2024.2	6
DAP Server 2024.2	6

# New and improved features in Oasis montaj 2024.2

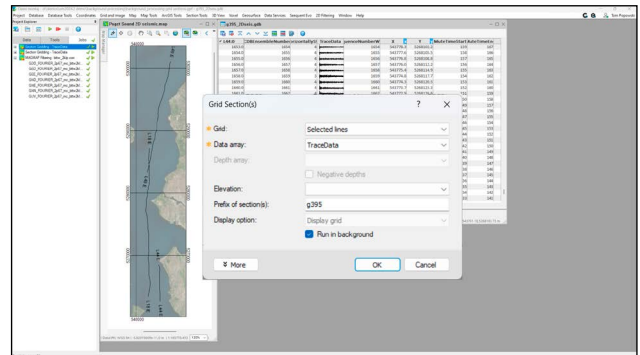
## Run 2D FFT filtering in the background

Process 2D FFT (Fast Fourier Transform) filtering in the background and keep working without waiting.



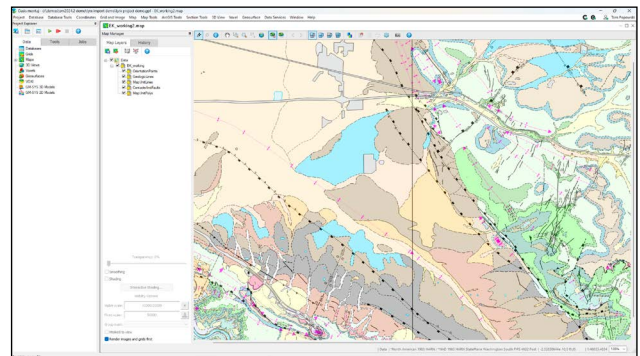
## Run section gridding in the background

Perform section gridding in the background and easily manage the resulting grids in the Project Explorer.



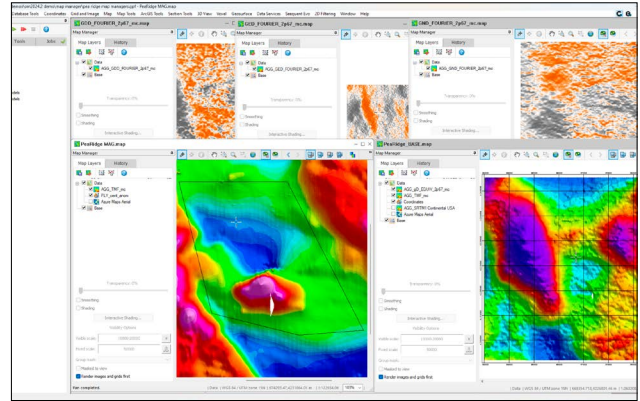
## Import 2D LYRX files

Import 2D LYRX files from ArcPro into Oasis montaj, displaying GIS data as it appears in ArcGIS Pro so that spatial data is accurately represented and easily interpreted across both platforms.



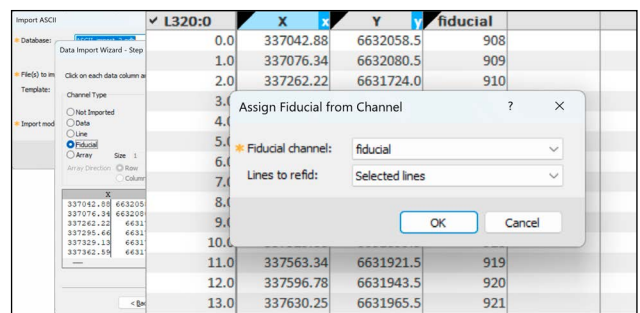
## Manage map managers

Open and pin, or close, Map Manager panels and efficiently maximise the workspace when dealing with numerous cross-section maps with new GX commands. A new advanced setting controls the default behaviour of the Map Manager when a map is created.



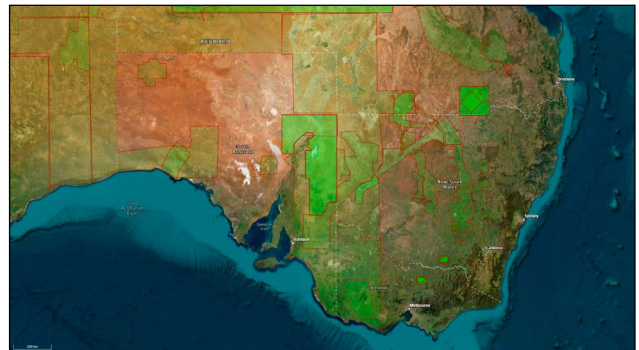
## Support original fiducials on import

Capture the fiducial field and set it as the database fiducial when importing ASCII and ASEG-GDF2 files, maintaining the original time markers and temporal structure and eliminating the need for manual adjustments or re-fiducializing. Alternatively, assign an existing database channel as the database fiducial.



## ASEG-GDF2 file handling

Account for variations in data structure and capture coordinate system information on ASEG-GDF2 file import, reducing the need for manual adjustments.



# Bug fixes

## Oasis montaj 2024.2

The following issues have been addressed for Oasis montaj **2024.2**:

### General

CN: N/A	'Create a Noise Channel' (Database Tools > Filters) no longer adds dummies beyond data limits to the end of the line in all channels.
CN: N/A	The 'Tilt Derivative' tool is now available under the Grid and Image > Filters menu.
CN: N/A	The error "Run failed because Failure in the "ColourBar" GX.NET Form (Index and length must refer to a location within the string. Parameter name: length)" no longer occurs when using the 'Colour Legend Bar' tool on specific map data layers.
CN: 00150582	Exporting a map at a high DPI value (set in the 'Image Raster Resolution' section) preserves the color zones (the color display) in the output image file.
CN: 00184046	Tiling rendering issues have been resolved when adding Azure Maps aerial imagery to maps.
CN: 00187073	When extracting sections from a voxel using a database, the output grids are now trimmed to eliminate locations beyond the edges of the voxel model.
CN: 00197274	When importing from or exporting to a GeoTIFF file format, colours, location, and orientation are preserved for raster data, including oriented plan and section grids.
CN: 00204983	'Export Multiple Maps' works as expected for the PDF format; each selected map is successfully exported into a separate PDF document.
CN: 00205235	When extracting sections from a voxel using a database with lines extending beyond the voxel's dimensions, section creation stops at the voxel's limits and output grids are no longer stretched to the full extent of the lines.
CN: 00211370	The error "SetFidIncr_VA: Invalid Fiducial Increment" no longer occurs when merging two databases containing channels entirely populated with dummy values.
CN: 00211471	The error "The ... file is corrupted at ... Attempt to read the IPJ object block 5 but found the block 4 instead." no longer occurs when opening older versions (e.g., 9.3.3) of grid and map files.
CN: 00212790	In the colour distribution dialog (opened from 'Colour Tool') for a map data layer, the contour interval is no longer greyed out for the Linear and Log-linear transforms.
CN: 00217734	ArcGIS Pro layer files (.lyrx) can now be imported into Oasis montaj on 2D plan maps.

### 2D Filtering

CN: 00147203	Applying a pseudo-gravity filter to a grid no longer triggers the error "Image is empty, cannot calculate statistics for colour zoning."
--------------	--

### Induced Polarization & Resistivity

CN: 00152937	Importing an Instrumentation GDD file ('Import IP Data' dialog) no longer triggers the error: "Error importing Instrumentation GDD file" *.gdd". The file does not appear to be a valid GDD file. Expected ' Version PPC:' on the first or third line."
CN: 00201163	The 'Identify Reversed Polarity' tool correctly swaps the coordinates of the two receive or changes the sign of the voltage for identified reversed polarity readings.

### UAV Merge Sorties

CN: 00215850	In 'Identify Original Subarea Lines', continuous lines where the drone returns to the takeoff location are now correctly identified, with only the line segments to and from the station being removed.
--------------	---

### VOXI

CN: 00075224	The Mask channel is now correctly handled in DCIP conductivity and chargeability inversions.
--------------	--

# Target 2024.2

The following issues have been addressed for Target **2024.2**:

## General

CN: N/A	'Create a Noise Channel' (Database Tools > Filters) no longer adds dummies beyond data limits to the end of the line in all channels.
CN: N/A	The 'Tilt Derivative' tool is now available under the Grid and Image > Filters menu.
CN: N/A	The error "Run failed because Failure in the "ColourBar" GX.NET Form (Index and length must refer to a location within the string. Parameter name: length)" no longer occurs when using the 'Colour Legend Bar' tool on specific map data layers.
CN: 00150582	Exporting a map at a high DPI value (set in the 'Image Raster Resolution' section) preserves the color zones (the color display) in the output image file.
CN: 00184046	Tiling rendering issues have been resolved when adding Azure Maps aerial imagery to maps.
CN: 00187073	When extracting sections from a voxel using a database, the output grids are now trimmed to eliminate locations beyond the edges of the voxel model.
CN: 00197274	When importing from or exporting to a GeoTIFF file format, colours, location, and orientation are preserved for raster data, including oriented plan and section grids.
CN: 00204983	'Export Multiple Maps' works as expected for the PDF format; each selected map is successfully exported into a separate PDF document.
CN: 00205235	When extracting sections from a voxel using a database with lines extending beyond the voxel's dimensions, section creation stops at the voxel's limits and output grids are no longer stretched to the full extent of the lines.
CN: 00211370	The error "SetFidIncr_VA: Invalid Fiducial Increment" no longer occurs when merging two databases containing channels entirely populated with dummy values.
CN: 00211471	The error "The ... file is corrupted at ... Attempt to read the IPJ object block 5 but found the block 4 instead." no longer occurs when opening older versions (e.g., 9.3.3) of grid and map files.
CN: 00212790	In the colour distribution dialog (opened from 'Colour Tool') for a map data layer, the contour interval is no longer greyed out for the Linear and Log-linear transforms.
CN: 00217734	ArcGIS Pro layer files (.lyrx) can now be imported into Oasis montaj on 2D plan maps.

## Geosoft Viewer 2024.2

The following issues have been addressed for Geosoft Viewer **2024.2**:

### General

---

CN: 00150582	Exporting a map at a high DPI value (set in the 'Image Raster Resolution' section) preserves the color zones (the color display) in the output image file.
CN: 00197274	When importing from or exporting to a GeoTIFF file format, colours, location, and orientation are preserved for raster data, including oriented plan and section grids.
CN: 00204983	'Export Multiple Maps' works as expected for the PDF format; each selected map is successfully exported into a separate PDF document.
CN: 00211471	The error "The ... file is corrupted at ... Attempt to read the IPJ object block 5 but found the block 4 instead." no longer occurs when opening older versions (e.g., 9.3.3) of grid and map files.
CN: 00212790	In the colour distribution dialog (opened from 'Colour Tool') for a map data layer, the contour interval is no longer greyed out for the Linear and Log-linear transforms.
CN: 00217734	ArcGIS Pro layer files (.lyrx) can now be imported into Geosoft Viewer on 2D plan maps.

---

## DAP Server 2024.2

The following issues have been addressed for DAP Server **2024.2**:

### DAP Admin / DAP Server Enterprise

---

CN: N/A	In GDP (Geoscience Data Service Portal), the "Identify" tool correctly identifies and displays the properties of the selected layer.
CN: N/A	LYR file packages are now successfully submitted from the Metadata Editor (MDE) to the DAP incoming folder; the error related to Esri license initialization no longer occurs.
CN: N/A	In the Geoscience Data Service Portal, WMS layers are now successfully exported as GeoTIFF raster images.

---