

Res2DInv 2025.2 Release Notes

Smarter defaults. Clearer visuals. Faster workflows.

This release focuses on improving visual consistency, reducing setup time, and making it easier to interpret and present results—especially across large or repeat datasets.

Table of Contents

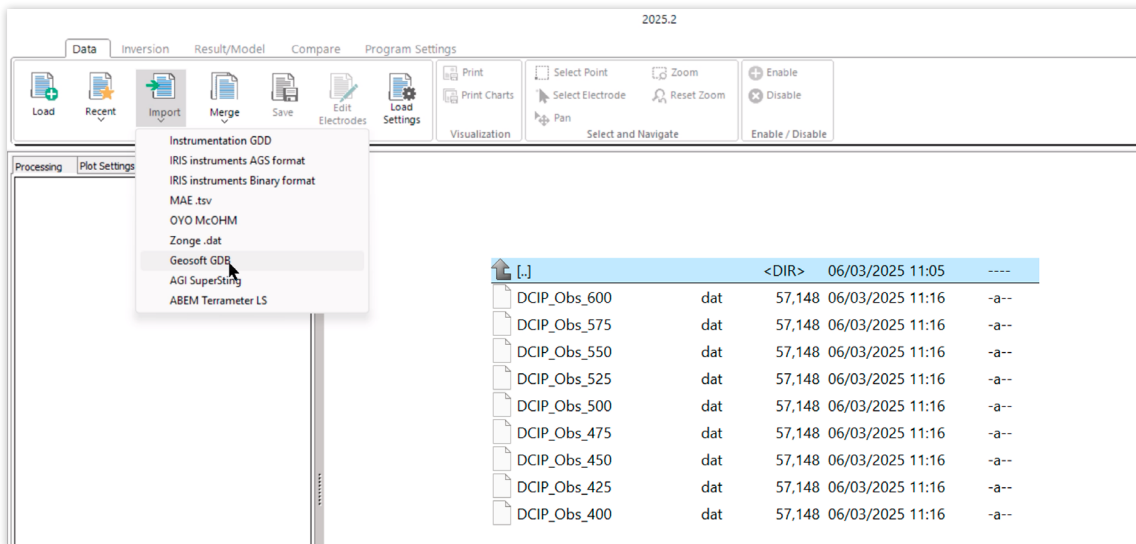
New and improved features in Res2DInv 2025.2	2
Smarter labelling for multi-line imports	2
Bulk tools for faster workflows	2
Invert without IP	3
Edit colourbar with decimal precision	3
Compare models in 3D	4
Summary of new features	5
Bug fixes	5

New and improved features in Res2DInv 2025.2

Smarter labelling for multi-line imports

Automatically name *.dat* files using original line names

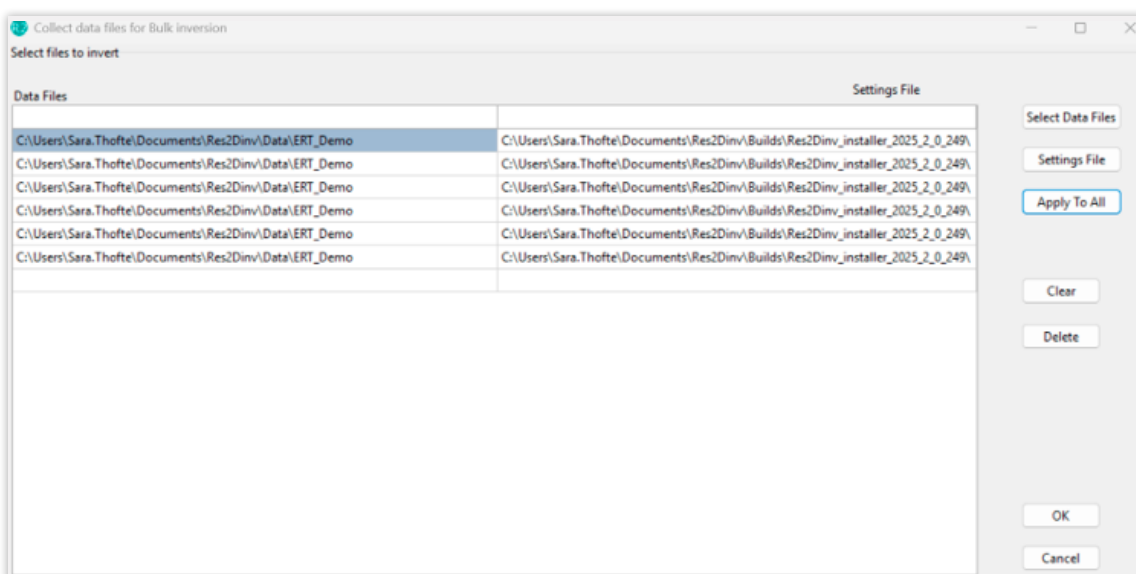
When importing a Geosoft *.gdb* with multiple 2D lines, each resulting *.dat* file is now named using the original line name. This reduces the need for manual renaming and helps keep large, multi-line projects organised and traceable.



Bulk tools for faster workflows

Invert, display, export, and review multiple models at once

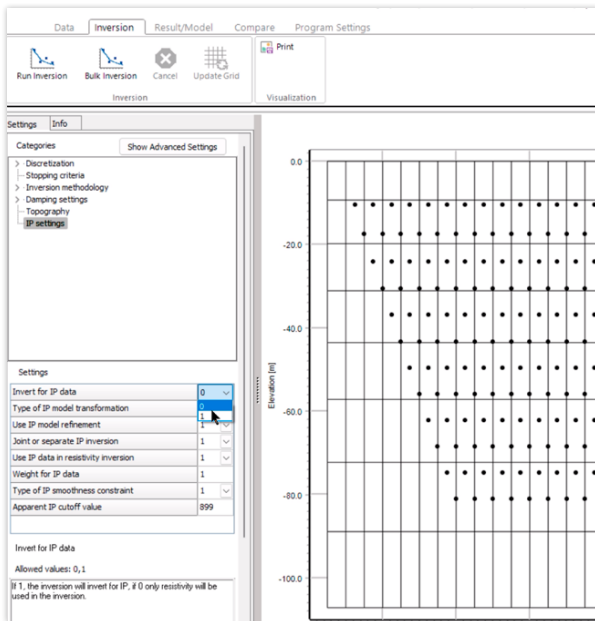
These tools help you move faster when working with large datasets or multiple profiles. You can now invert multiple datasets at once, apply display settings across all models in the compare tab, export several models at once, and add multiple models to the 3D Viewer in a single step.



Invert without IP

Focus on resistivity when IP data is noisy or irrelevant

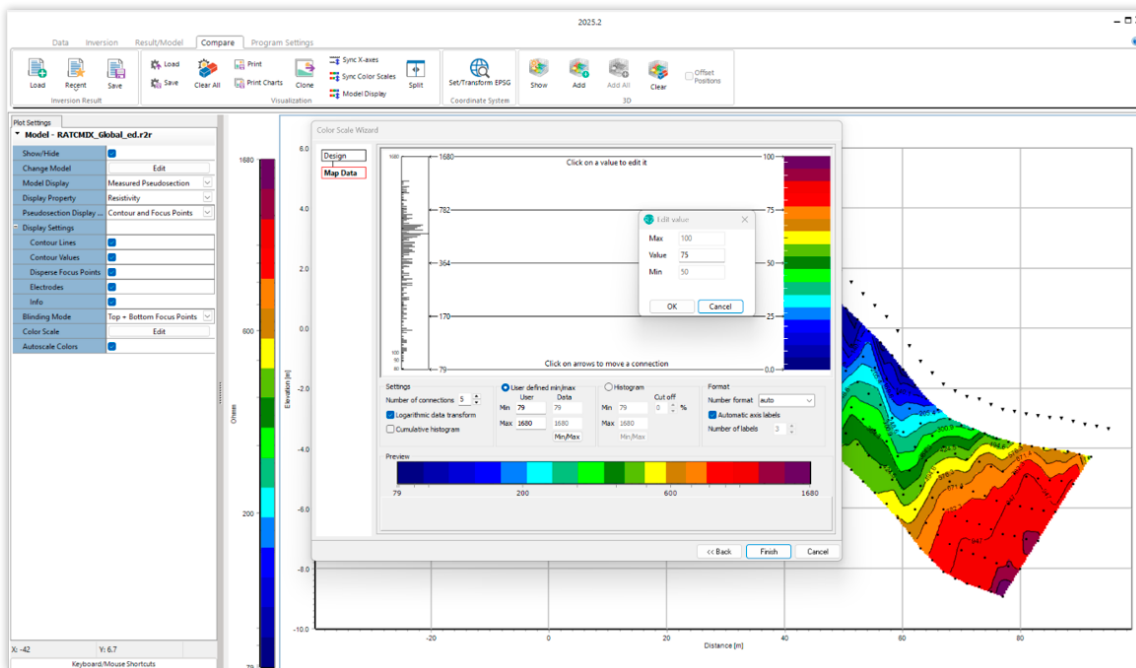
You can now choose to run inversions using only resistivity values, even when IP data is present. This is especially helpful when IP data is noisy, incomplete, or not relevant to the interpretation—saving time and avoiding unnecessary processing.



Edit colourbar with decimal precision

Set exact colour transitions for consistent visualisation

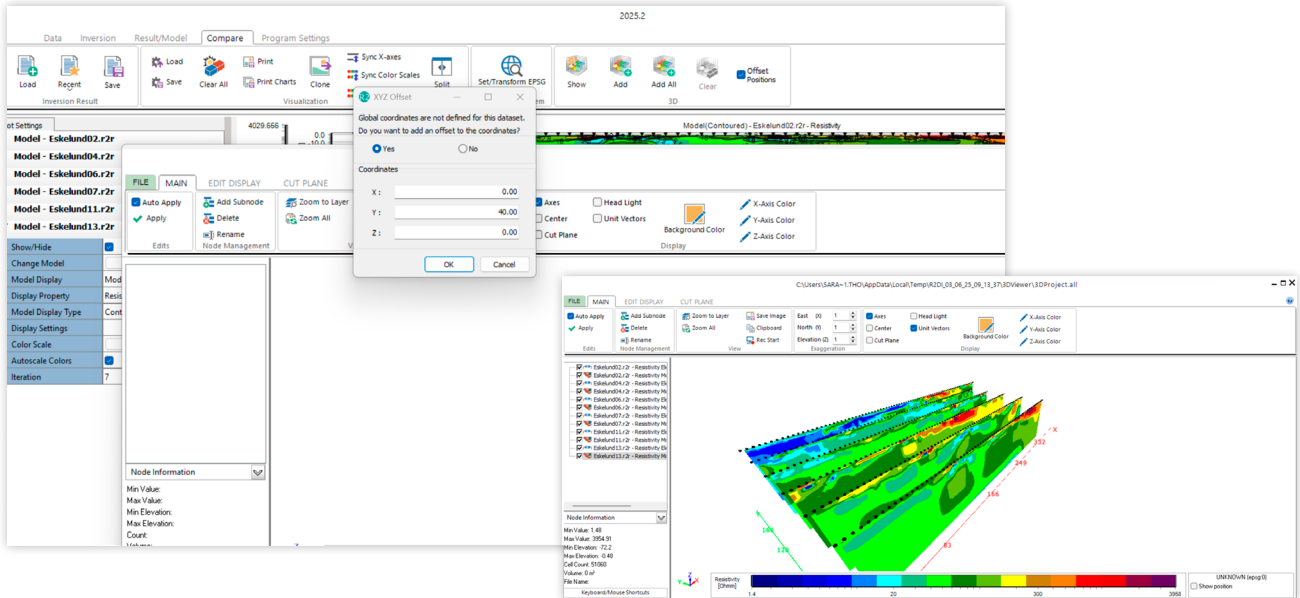
You can now click directly on a colour scale connection to enter an exact value—down to the decimal. This gives you precise control over colour transitions and helps you create consistent, discrete colour scales across models and sessions. It's especially useful when preparing visuals for reports or comparing results over time, supporting clearer interpretation and communication.



Compare models in 3D

View overlapping profiles side-by-side in the 3D Viewer off-set

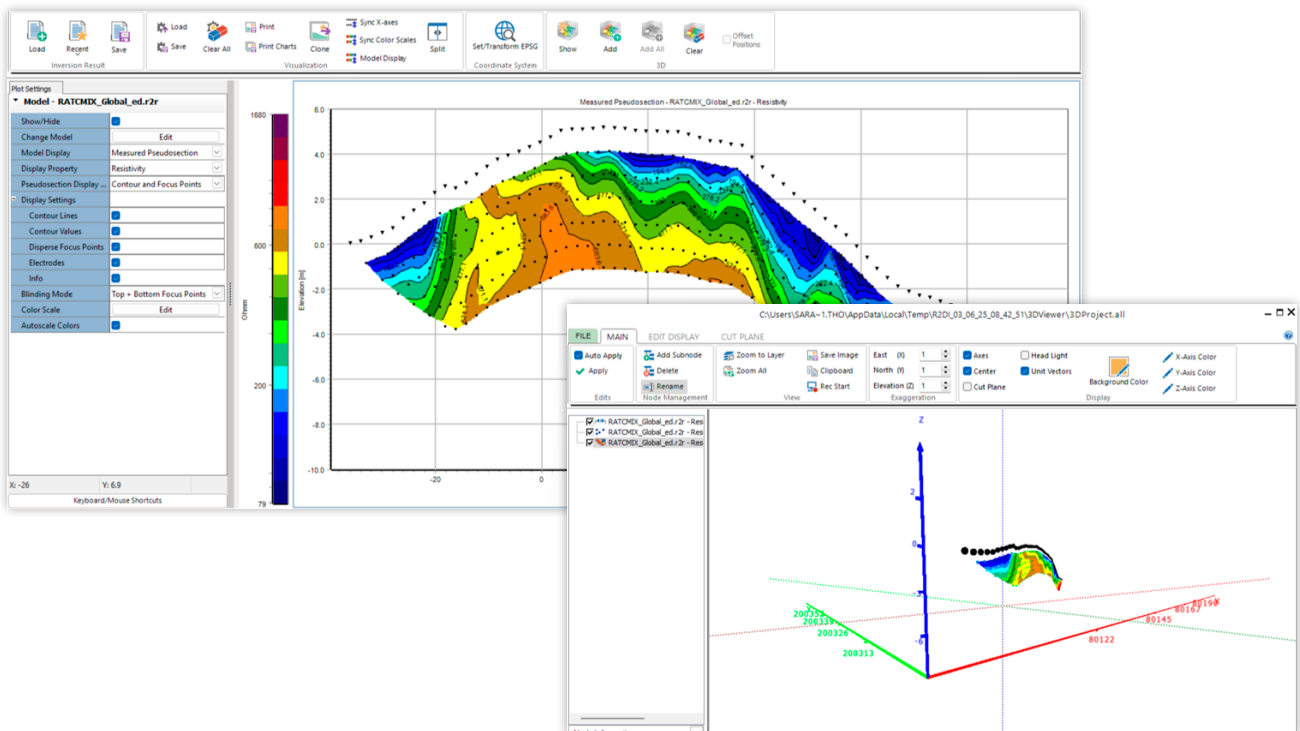
You can now view multiple models from the same profile side-by-side in the 3D Viewer using a user-defined offset. This makes it easier to compare results from different inversion settings—ideal for datasets without coordinates, time-lapse monitoring, repeat surveys, or testing alternative inversion parameters. The side-by-side layout helps you spot differences more clearly and explain them with confidence.



Save default settings

Automatically apply saved display preferences across sessions

You can now save your preferred plot settings—such as colour scales, axis ranges, and display modes—and have them automatically applied each time you open Res2DInv. This is especially useful for users who consistently work in either conductivity or resistivity mode, and want a consistent visual setup across sessions and datasets.



Summary of new features

- Support for Bentley login
- New bulk tools to simplify working with several data sets and models:
 - Bulk inversion: Select several data files to invert in one go. One data file will be inverted at a time.
 - Bulk model display: Change model display, display parameter and display type on all models in the compare tab at the same time.
 - Bulk export: Export many model results to different formats at the same time.
 - Bulk add to 3D viewer: Add several models to the 3D viewer at the same time.
- Possibility to save plot settings as default that will be automatically applied whenever Res2DInv is opened.
- Possibility to invert only for resistivity, for dataset containing IP data.
- Compare models at the same location by displaying profiles in 3D viewer with an offset instead of actual coordinates.
- Edit colour scale: Set the exact value of a colorscale connection by clicking its value in the connections window to create more accurate discrete colorscales.
- When importing Geosoft *.gdb* containing several 2D lines, the resulting *.dat* files are now labeled from the line name.

Bug fixes

- Corrected issue where only the first survey was processed when reading a Terrameter database with multiple surveys.
- Resolved compatibility issue with AMD graphics drivers that previously prevented use of the 3D Viewer.
- Fixed reading errors for *.dat* files with global coordinates when fixed regions, aquatic surveys, or sharp boundaries were present.
- Addressed issue where selecting a custom colour scale for resistivity or conductivity would apply it to both.
- Ensured all bottom axes are synchronised in Result/Model views.
- Ensured all plots update correctly when automatic colour scales are refreshed.