

 CENTRAL

Seequent Central

RELEASE NOTES NOVEMBER 2023

# The Latest with Seequent Central and Leapfrog

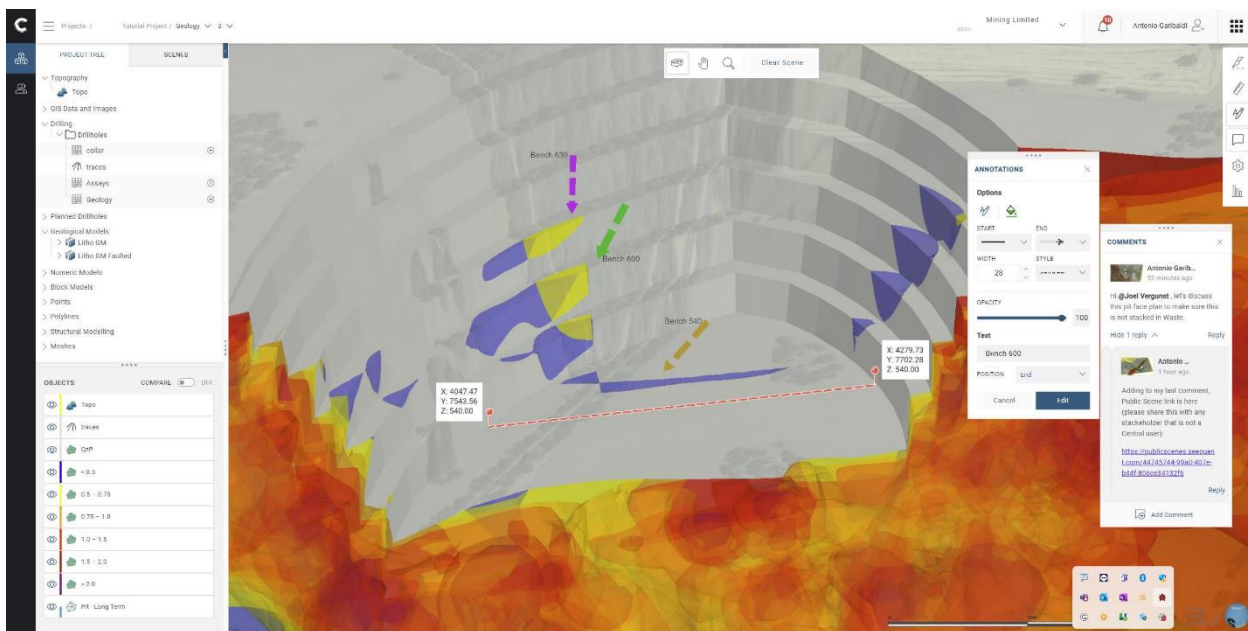
The following enhancements are included in the November 2023 updates of Central and Leapfrog, which affects Central users:

1. 3D Annotations in Central Web Visualisation
2. Publish and Import Planned Directional Wells
3. Central “Out of Date” Workflow Improvements
4. Coordinate System Improvements for iTwin Compatability

## 3D ANNOTATIONS IN CENTRAL WEB VISUALISATION

Seequent Central’s web visualisation now enables users to communicate and collaborate effectively by adding 3D annotations directly to the 3D scene, allowing them to convey insights, observations and notes to other team members and stakeholders.

Users can annotate specific geological features, layers or structures within the 3D model, aiding in clearer data interpretation and analysis.



## PUBLISH AND IMPORT PLANNED DIRECTIONAL WELLS

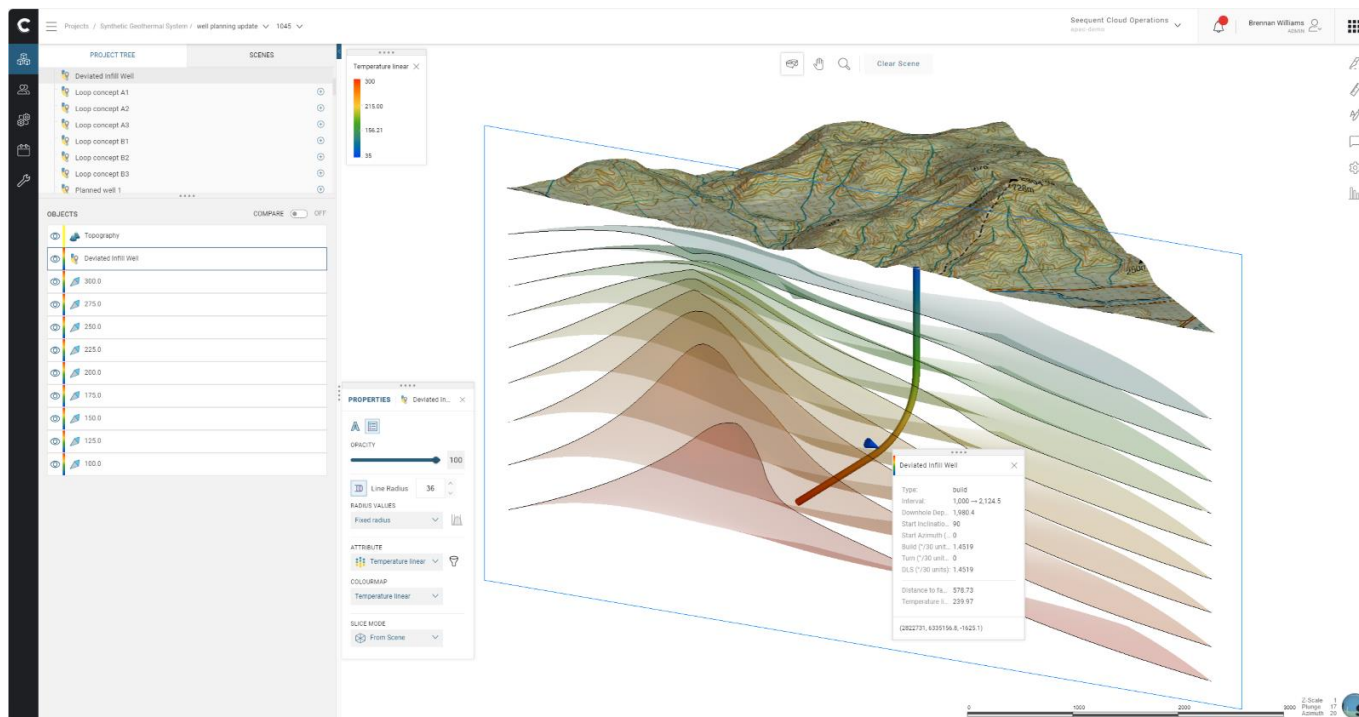
Directional well plans created in Leapfrog Energy can now be published to Central, allowing well plans to be shared between Leapfrog Energy projects and communicated to external stakeholders through Central’s web-visualisation. Users can now collaborate on the planning and design of wells in an online environment, making full use of the information available within Leapfrog Energy projects. Model evaluations on planned well trajectories are also published and can be visualised.

Published wells can be imported from the Central Project Data Room, modified and re-published, allowing designs to be iterated. Evaluations however, are not re-imported, only the well geometry.

*This update is specific to Leapfrog Energy users.*

## CENTRAL “OUT OF DATE” WORKFLOW IMPROVEMENTS

When publishing a project to Central from Leapfrog, if network connection issues interrupt the publishing event, the Central button will show a red bar when the interruption is detected. A series of publish re-attempts will be started, with increasing gap periods between each attempt. Leapfrog will continue attempts to publish for approximately an hour before abandoning the publish event.



## COORDINATE SYSTEM IMPROVEMENTS FOR ITWIN COMPATABILITY

Extra support has been added when publishing information to Central. This is specifically designed to allow for better compatibility with Bentley iTwin, as the coordinate system is crucial to this workflow.

*Currently only available to Early Access Program users.*



COMPLEXITY TO CLARITY

Seequent is a global leader in the development of visual data science software and collaborative technologies.

[seequent.com](https://seequent.com)

